

Journey

To A New Way of Living



TAPESTRY
SENIOR LIVING

Wickliffe

TapestrySenior.com/Wickliffe

Tapestry Wickliffe

Assisted Living and Memory Care Communities.
Exceptional Care. Exceptional Living.

Mission

- » We empower our associates to provide the best service through innovation and continuous improvement.
- » We leverage our associates' strengths and team up with others.
- » We create a communication framework where information is continually shared in a frank, clear, and nonthreatening manner, and where every voice matters.
- » We deliver person-centered care.

Vision

Our passion inspires us to weave our talents to create and serve communities where people flourish.

Values

INITIATIVE

We are self-starters. We readily act without being told.

INTEGRITY AND ETHICS

We do the right thing, even when no one is watching.

ACCOUNTABILITY

We achieve results, deliver on promises, and meet or exceed expectations.

COLLABORATION

We work with others in a productive fashion, offer help or ask for help as needed, and are responsive.

STEWARDSHIP

Our actions improve the experience of our residents, associates, investors, and the community.



About Wickliffe

You are a unique person with a rich story, and have specific wants and needs. Listening to that story is the best way to help you on your personal journey. Our customized, person-centered approach is built on respect for you as an individual.

A Rich Tapestry - We chose the name "Tapestry" because it embodies our mission and our story. No organization or person can realize their full potential alone. The richest life consists of many threads woven together to create a dynamic tapestry - an ever-changing vignette made

richer by the people in our lives. Tapestry Wickliffe's story interweaves tradition, innovation, technology and service to help residents feel purposeful, valued, respected, dignified and empowered. The threads are the Tapestry nurses and caregivers, community doctors, therapists, community partners, families and most importantly... you.

Dignity and Respect - We honor the past and integrate it into the resident's current environment building a sense of security, comfort and belonging. We promote dig-

nity, supporting each resident's independence. Together with the resident, family, physician, and staff we will work with you to customize a personalized care plan.



Call to Schedule a Tour (440) 373-9900

COMFORT & ELEGANCE

Living Your Best Life

The heart of Tapestry Senior Living Wickliffe is our large indoor Central Park. With four stories of windows, it's always a bright sunny place to gather with your friends, relatives and neighbors. Meet friends for a cup of coffee and cannoli at the Prima Café while the grandkids play a few yards away on the swing set. On Sundays, the game will be on the TV over in the Living Room. Browns Jerseys aren't required, but maybe encouraged. Just off the main Central Park is a secure "outdoor" memory care garden for those neighbors to gather with friends and relatives. Whether you choose a private loft style assisted living apartment or the security of a memory care neighborhood; you are just steps away from all that Central Park has to offer.

*Exceptional amenities
and 24-hour personal care
tailored to your needs.*



COMMUNITY AMENITIES

Choices Abound at Tapestry Wickliffe



Medical & Safety

- Emergency Services 24/7/365
- Push-button and pull cord emergency call stations
- Telehealth monitoring system
- Daily “I’m OK” checks to make sure all is well
- Health Information Exchange with healthcare providers
- Assistance in coordinating healthcare appointments and services including transportation

Dining Services

- Breakfast, lunch, and dinner are served in one of our dining rooms. Snacks and beverages are always available in multiple locations throughout the community.
- Anytime Dining in the main dining room served restaurant-style
- Private dining area for special occasions



Exercise & Beauty

- Dedicated exercise classroom
- Health and wellness programs
- Spa, equipped with a specially designed therapeutic step-in jetted whirlpool tub
- Full-service salon and barber shop



Exceptional Amenities Catered to Your Needs

Entertainment

- Movie theater
- Clubs and groups created by the residents
- Life Enrichment Coordinator
- A robust calendar of activities and events
- Music and art programs, and guest speakers

Laundry & Housekeeping

- Weekly housekeeping services
- Personal laundry and/or linen service weekly (up to 2 loads a week)
- Clothing, flat linens, and towels laundered weekly. A free laundry is also available for self-service



Apartment Features

- Spacious private studio and 1-bedroom suites
- Cable TV
- Wi-Fi access to high-speed Internet
- Enjoyment of all common areas, including our fabulous atrium gardens, activity rooms, chapel, and outdoor courtyards



ENHANCED LIVING

Independence and Self-Determination

Tapestry Senior Living believes everyone should have the opportunity to remain independent and in charge of their daily lives. To help fulfill this belief Tapestry offers its special brand of Enhanced Living opportunities to encourage and assist a person to develop and maintain maximum independence and self-determination while living in a safe, active, and caring environment.

For a fixed monthly fee, Tapestry Senior Living provides an independent home for each resident with access to community services and amenities and, when needed, assistance with activities of daily living. And of course your beloved companion is welcome to come along on this new adventure – we're pet friendly!

Encouraging a Person to Maintain Maximum Independence

Enhanced Living Services

- Weekly housekeeping services.
- Electricity, gas, water, sewer, trash, and cable TV.
- Wi-Fi access to high-speed Internet.
- Local and domestic long-distance services.
- Breakfast, lunch, and dinner are served in one of our dining rooms. Snacks and beverages are available in multiple locations throughout the community.
- Emergency Services 24/7/365
- Personal clothing, flat linens, and towels laundered weekly. A free laundry is also available for self-service.
- Maintenance of your apartment, the building, and surrounding grounds.
- Life enrichment programs.
- Scheduled transportation to assist residents to attend activities outside of the community.
- Assistance in coordinating healthcare appointments.
- Daily "I'm OK" checks to make sure all is well.



ASSISTED LIVING

Personal Care Tailored to Your Needs

Tapestry Wickliffe takes a person-centered approach to assisted living, enhancing the lives of individuals in a personalized and meaningful way. When you live in a Tapestry Wickliffe Assisted Living apartment, you'll receive customized support in a secure community that embraces and fosters your maximum level of independence.

You'll receive personalized assistance with the activities of daily living, while also enjoying innovative programs and a robust calendar of activities and events. Tapestry Wickliffe Assisted Living helps you live life to its fullest. At Tapestry Wickliffe independence and choice are second nature, thanks to the many personal services and amenities.



Assisted Living Services

- Health information exchange
- Wellness and fitness monitoring
- Push-button and pull cord emergency call stations.
- Wearable wireless pendants can be worn either around the neck or discreetly on the wrist.
- Staff Rounds Check feature validates and reports electronically without the need for checklists. Also, when a resident is not checked on the prescribed schedule, the caregiver is reminded with an automatic alert.
- Incontinence Detection Silent Alert maintains the dignity of our residents.
- Access control systems secure the Tapestry building and allow access only to authorized personnel.
- Motion-based and pressure sensor-based features alerts caregivers to movement so they can ensure the resident remains safe.

Assisted Living is about empowering you to live life to its fullest

MEMORY CARE

Tailored for Your Needs

Tapestry's person-centered approach is evident in our memory care neighborhoods. We treat each person at Tapestry as a unique individual with a story to tell. Throughout this journey, our team of caregivers works to make sure each resident remains an actively engaged community member.

Our Tapestry team uses a collaborative approach; working with you to customize a care plan enhancing each resident's physical, emotional and social well-being. In this process, we focus on the capabilities and strengths of individuals and connect in a meaningful way.



OUR NEIGHBORHOODS:

Private Suites and Specialized Care

Memory Care at Tapestry Wickliffe is offered in smaller neighborhoods where residents have the personalized support they need in a more intimate and secure setting. The smaller scale allows more individualized programming in a relaxed atmosphere. While the neighborhood offers security and comfort, we also provide engaging indoor and outdoor activities. Whether it's a sunny spot in their own corner of Central Park or outings for fishing or shopping; Tapestry Memory Care residents can enjoy the changing Ohio seasons.

Memory Care at Tapestry Wickliffe is offered in smaller neighborhoods where residents have the personalized support they need



Memory Care Services

- Specialized memory care apartments.
- Music & memory. Our nationally accredited music therapy program.
- Specially trained memory care staff.
- "Person-Centered Care". A personalized care plan for each individual.
- Consulting dietitian.
- Staff onsite in each neighborhood.
- Large private suites with private bath and shower.
- Furniture provided if requested.



THE GARDENS:

Take a Walk in The Park

In addition to the main park, memory care residents and their guests have their own dedicated indoor garden. Take a walk, enjoy the sound of grandkids playing on the playset, smell the pizzas cooking at Prima Cafe or just sit in the warm sun and visit.

DINING ON YOUR SCHEDULE

All Day Dining At Tapestry Wickliffe

At Tapestry Senior Living, we understand that you are an individual with unique tastes and desires. That's why Tapestry is committed to the unique concept of All Day Dining. Rather than eat at the same assigned time and place each day, you decide when you would like to come down to one of our unique restaurants.

Prima Cafe



Open early for hot coffee, fresh rolls, and other breakfast items. Lunch menu items include hot and cold sandwiches, pizza and salads. In the evening, gather with your friends over a glass of wine or a beer.

Erie Grill



Colder months will feature more house made soups including Pasquale's family recipe pasta e fagioli. Summer menus make use of herbs from our garden and feature grilled meats with fresh local produce.

Our chef's menu reflects the changing seasons of northern Ohio. In Spring and Summer, herbs and other produce from our garden find their way into salads and main dishes. In the Fall, look for crisp apples and local squash used in creative and delicious ways. In Winter, hearty soups and stews take center stage.

Garfield Dining Room



With linen table cloths and a subdued atmosphere, the Garfield offers simple elegance. Open for Lunch and Dinner, the rotating menu features a blend of traditional American and international dishes.

In Room Dining



If you feel like relaxing in your apartment or hosting a friend, we do offer room service.



Sunday Brunch With the Family

Of course, food is more than just nourishment. Gathering together with family, friends and neighbors is part of the fabric of our lives. Residents and their families gather at Tapestry for our traditional Sunday Brunch. Enjoy a menu filled with a variety of delightful fares like our fresh baked pastries hot from the oven; country ham carved to order; house-made biscuits, with local honey or sausage gravy. And that's just for starters!



From adventurous cuisine to comfort food, Tapestry has it all.



OUR STAFF

People Who Care

TAPESTRY CAREGIVERS SUPPORT YOUR JOURNEY

Tapestry is a special place because Tapestry caregivers are special people. We work hard to identify and recruit the very best caregivers; not just people who are skilled and knowledgeable, but also who understand that helping seniors with their journey is one of the most important and meaningful things a person can do.

Caregiving is tough work. The job can be physically and emotionally demanding. Our caregivers work as a tight-knit team, supporting and encouraging each other. Like any tapestry, our strength comes from individual threads brought together with a common purpose. Together we can accomplish truly special things.

Tapestry believes in the importance of personal and professional growth. That's why our caregivers are always learning and growing. Our goal, as leaders in this industry, is to help create the leaders of tomorrow. Our approach is always supported by research-based best practices and includes training based on the work of nationally recognized dementia expert Teepa Snow.



*"I am continually reminded
just how blessed I am to work
with such amazing people"*

— Chris Blum, CEO of Tapestry Senior Living



FRIENDLY LIVING

Family & Friends

Here at Tapestry Wickliffe, our schedule revolves around your schedule. Our services are matched to meet all of your unique needs. You chart the course and we help you along the journey. We show this commitment in things like our signature All Day Dining, which offers your choice of restaurants at your convenience. We show it in how our nurses deliver customized, person-centered care for those who live in our spacious, assisted living apartments. We show it in how our memory care team helps residents and families thrive through a variety of services catered to fit you.

"When I walk into Tapestry Wickliffe, I just feel like I'm home." We hear this sentiment a lot because people care and take pride in this community. It shows in how we hosted Assisted Living and Memory Care residents displaced by hurricane. It shows in our commitment to understanding your unique needs via our Person-Centered Care. It shows in how Assisted Living and Memory Care neighbors stay active; fishing, touring brewpubs and worshipping together. But perhaps most of all, it shows in the smiles and hugs from our Tapestry Wickliffe team members.



*When I walk into Tapestry Wickliffe,
I just feel like I'm home.*

FAMILY & FRIENDS ARE ALWAYS WELCOME HERE AT TAPESTRY!



ACTIVE LIFESTYLE

Mind, Body, & Soul

Whether it is growing your own herbs in our gardens, taking salsa dancing lessons, participating in our talent show, watching college football, relaxing during a tea party, singing in our choir, creating a tasteful sensation at a baking class, or celebrating every holiday to its fullest; there is never a dull moment at Tapestry.

We know your needs and desires are unique. That's why at Tapestry, we work with you and your physician to design a personalized care plan to meet your needs. The goal of our dedicated nurses, therapists, and aides is to establish a strong relationship allowing us to learn from you and work to meet your needs consistently. It's the Tapestry difference!



*Living well goes beyond just
your physical health -
it includes your mind and spirit.*

PHYSICAL

Our Health and Wellness programs are a great way to exercise and meet new friends. If you prefer getting your exercise outside, enjoy Wickliffe's changing seasons and walk outdoors on our walking paths. Finished with your workout? Give your muscles some well-earned relaxation in our spa, equipped with a specially designed therapeutic step-in jetted whirlpool tub.

SPIRITUAL

Find a quiet place and enjoy some peaceful time to renew and reflect. Visit our on-site chapel or curl up with a good book in one of our cozy, quiet reading areas.

EMOTIONAL

Maintaining a positive outlook and feeling good about yourself and others are important to everyone's health. At Tapestry, we'll help you stay challenged, enjoy new activities and explore your creative side through music and art programs, guest speakers and a variety of social gatherings. There's even a theatre room where you can enjoy your favorite movies. Unique to Tapestry, we have a specialized Music and Memory facility, helping our residents use music as a valuable healing tool.



OUTINGS

Life Outside of Tapestry



We keep our residents stimulated with a variety of outdoor and indoor activities beyond the walls of our facility.

Whether it be a fishing excursion or a trip to the bowling lanes, we keep our residents stimulated with a variety of outdoor and indoor activities beyond the walls of our facility. It is our goal to create fun, life-enhancing activities in the outside world!

Coffee shops are an experience for the senses: the smell of roasted coffee and sweets, the taste of treats, and the sight and sound of baristas hard at work.

Picnicking in the park, exploring our beautiful city, sightseeing at our great museums, bowling at the ally, fishing at the beach or dining at a fun restaurant.



SPECIAL EVENTS

50s Prom, Halloween, Carnival!



The world becomes more vibrant and inviting when we give ourselves permission to play.



At Tapestry, we're always having a good time! Whatever the season, we have a special event planned for it as well as a number of other special events, such as our "carnival", to keep the social calendar hopping.

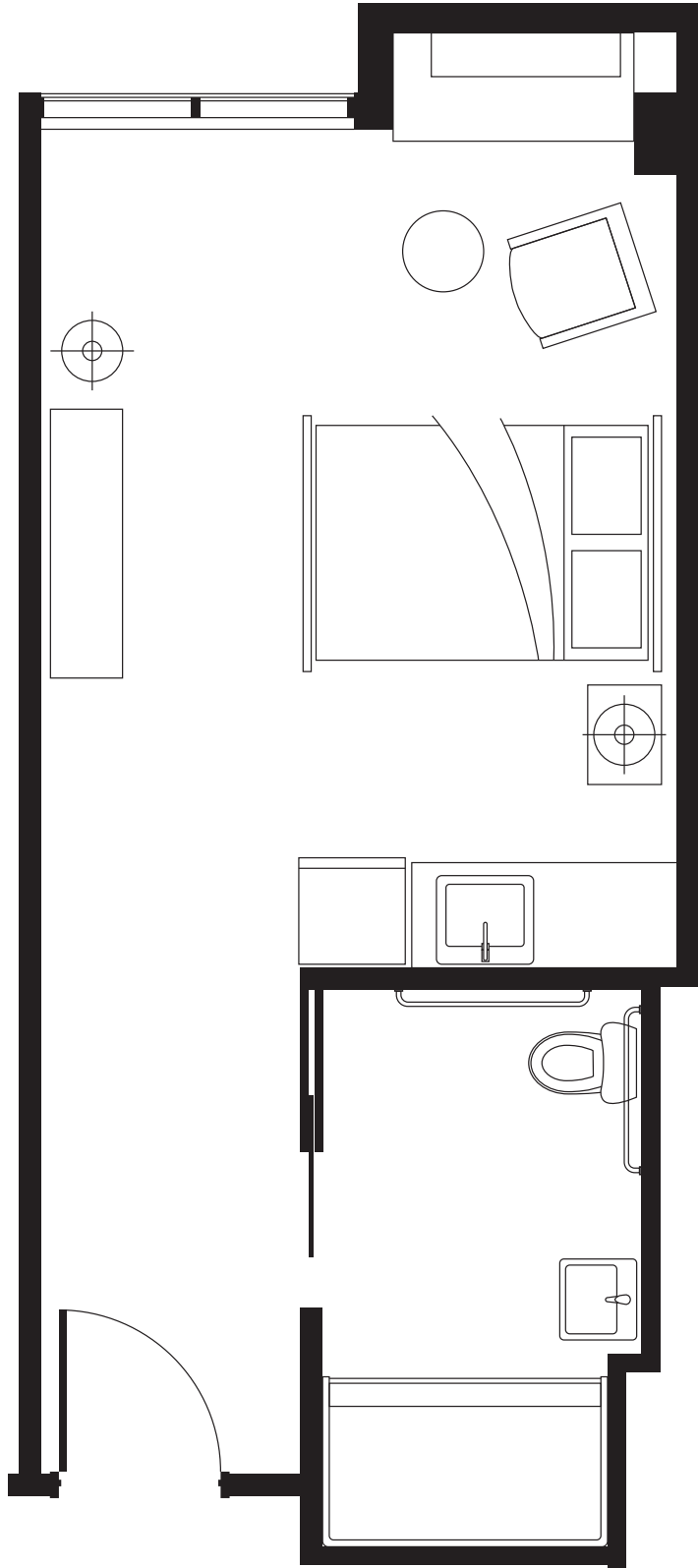
Tapestry's big events, like this carnival, are what make us feel truly alive, engaged, and connected. The world becomes more vibrant and inviting when we give ourselves permission to play.

Enjoying ukulele players at our luau, dancing at our 1950's prom, enjoying our white winter wonderland, celebrating our Veterans, and sharing a feast for the holidays.



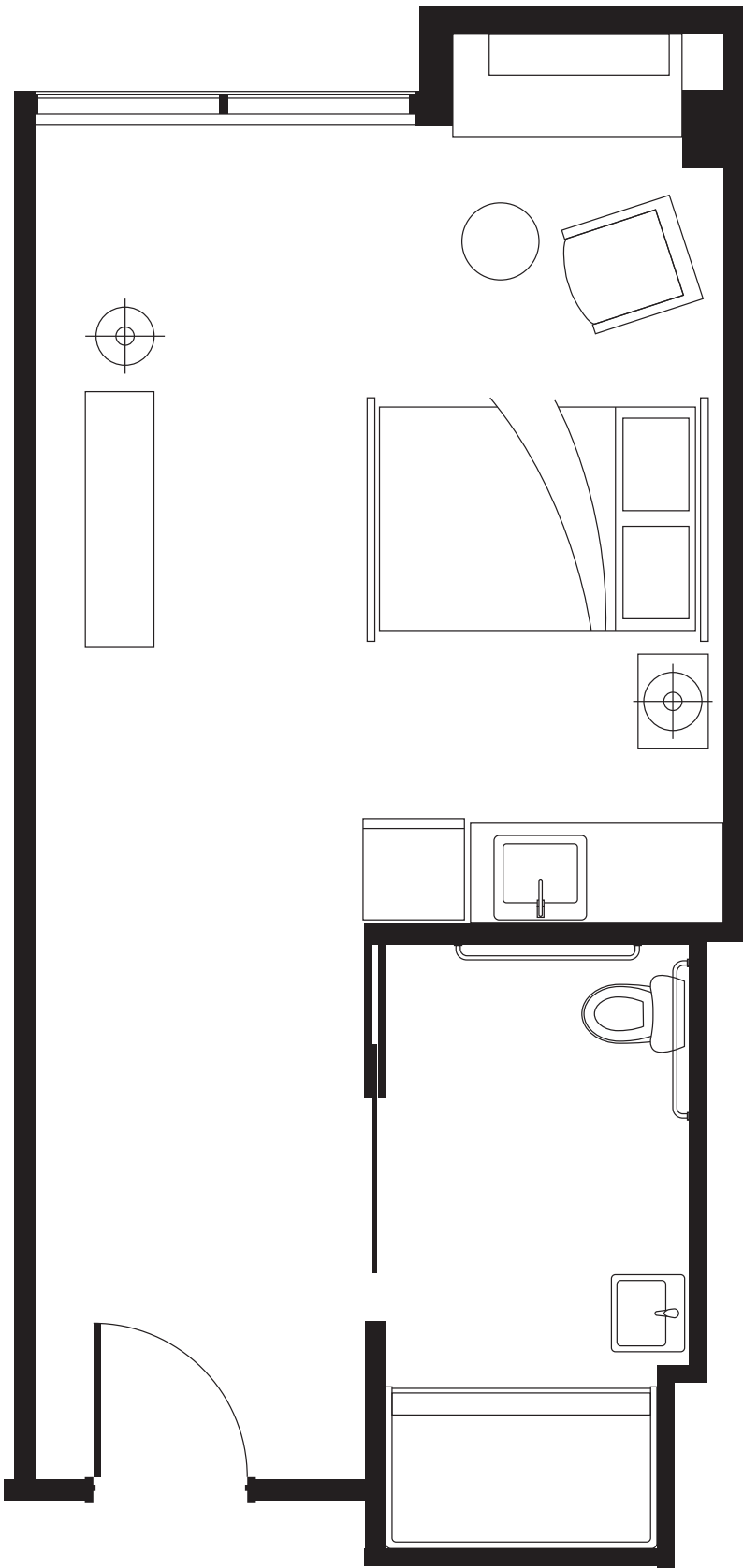
FLOOR PLAN - THE CHAGRIN

Assisted Living Studio



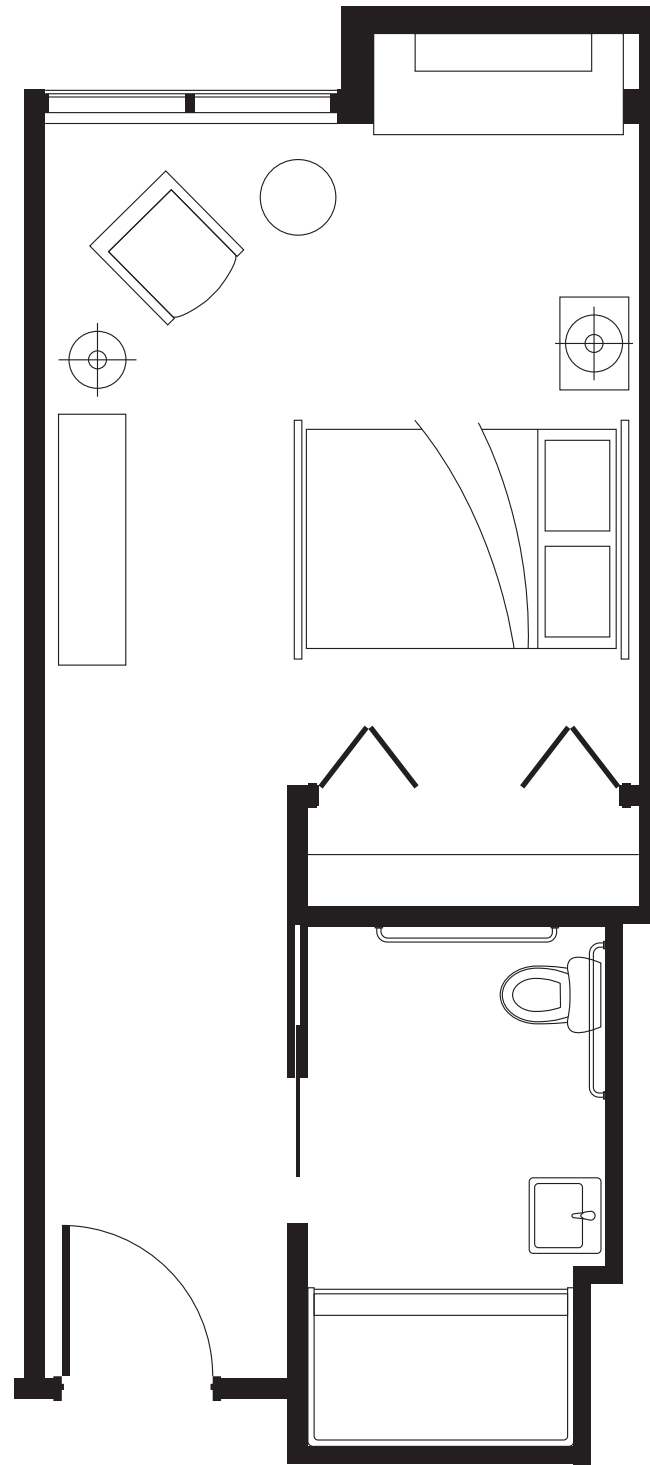
FLOOR PLAN - THE CHAGRIN DELUXE STUDIO

Assisted Living Studio



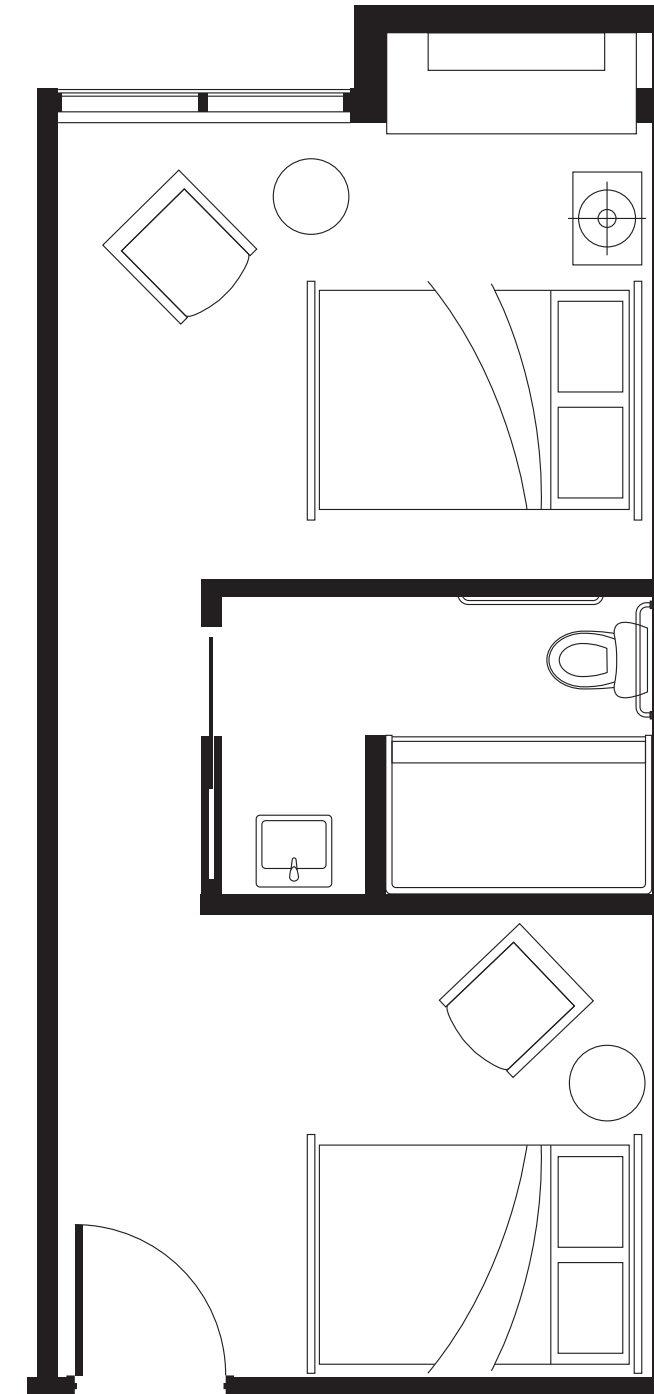
FLOOR PLAN - THE CUYAHOGA

Memory Care Apartment

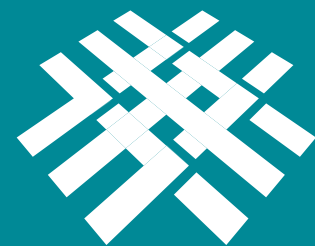


FLOOR PLAN - THE PORT CLINTON

Memory Care Semi-Private Suite







TAPESTRY
SENIOR LIVING
Wickliffe



TAPESTRY
SENIOR LIVING
Wickliffe

TapestrySenior.com/Wickliffe
28500 Euclid Avenue • Wickliffe, OH 44092 • (440) 373-9900
License #2846R

