

# *Journey*

*To A New Way of Living*



**TAPESTRY**  
**SENIOR LIVING**  
*Hoon Township*

[TapestrySenior.com/Moon](http://TapestrySenior.com/Moon)

# Tapestry Moon

Assisted Living and Memory Care Communities.  
Exceptional Care. Exceptional Living.

## Mission

- » We empower our associates to provide the best service through innovation and continuous improvement.
- » We leverage our associates' strengths and team up with others.
- » We create a communication framework where information is continually shared in a frank, clear, and nonthreatening manner, and where every voice matters.
- » We deliver person-centered care.

## Vision

Our passion inspires us to weave our talents to create and serve communities where people flourish.

## Values

### INITIATIVE

We are self-starters. We readily act without being told.

### INTEGRITY AND ETHICS

We do the right thing, even when no one is watching.

### ACCOUNTABILITY

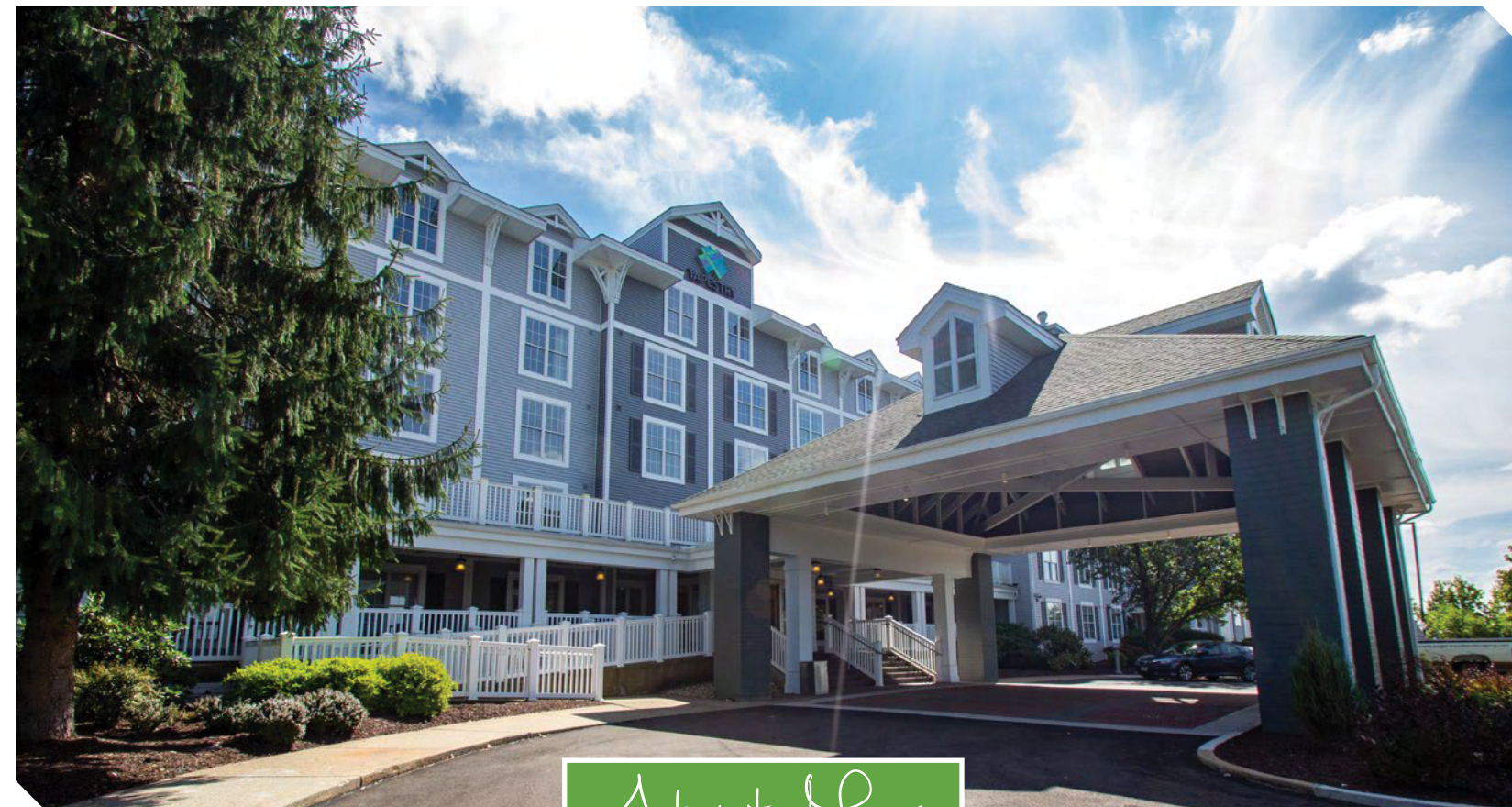
We achieve results, deliver on promises, and meet or exceed expectations.

### COLLABORATION

We work with others in a productive fashion, offer help or ask for help as needed, and are responsive.

### STEWARDSHIP

Our actions improve the experience of our residents, associates, investors, and the community.



## About Moon

Tapestry Senior Living knows that you are a unique person with a rich story. You have particular wants and needs - that doesn't change whether you live in a house, memory care neighborhood, assisted living apartment, treehouse or igloo. The great news for Pittsburgh area seniors, is that Tapestry Senior Living Moon Township is now open and ready to cater to you.

**A Rich Tapestry** - We chose the name "Tapestry" because it embodies our mission and our story. No organization or person can realize their full potential alone. The richest life consists of many

threads woven together to create a dynamic tapestry - an ever-changing vignette made richer by the people in our lives. Tapestry Moon's story interweaves tradition, innovation, technology and service to help residents feel purposeful, valued, respected, dignified and empowered. The threads are the Tapestry nurses and caregivers, community doctors, therapists, community partners, families and most importantly... you.

**Dignity and Respect** - We honor the past and integrate it into the resident's current environment building a sense of security, comfort and belonging. We

promote dignity, supporting each resident's independence. Together with the resident, family, physician, and staff we will work with you to customize a personalized care plan.



*Call to Schedule a Tour (412) 507-9999*

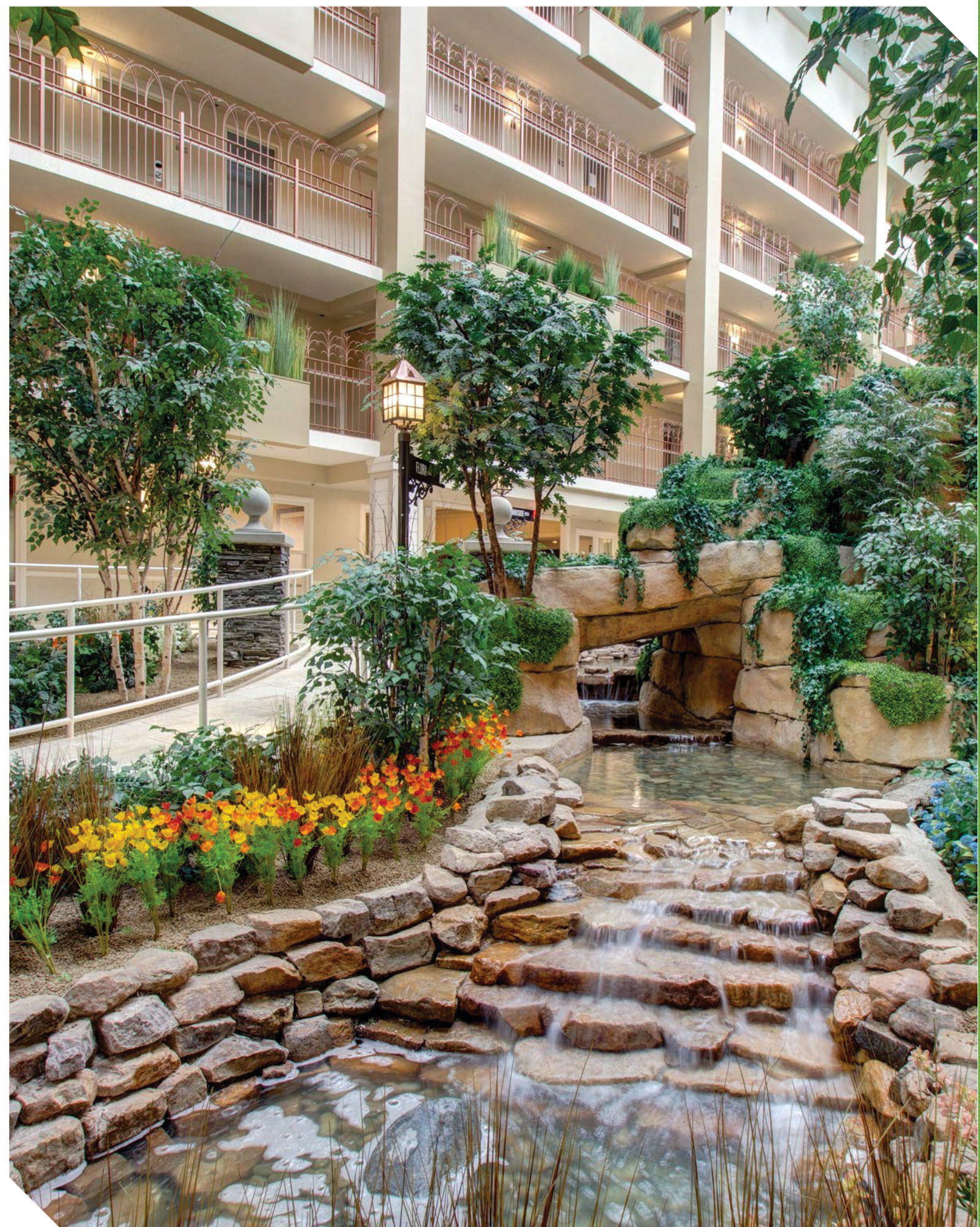
# COMFORT & ELEGANCE

## Living Your Best Life

Choices abound at Tapestry Moon. Enjoy a fresh chef-prepared meal in our dining room. Visit with friends over coffee at the Wise Owl Coffee Shop, or enjoy a happy hour beverage, and a small plate at our pub. Snuggle up with a book from the library or head over to the exercise room to work off those fresh-baked cookies. Or pamper yourself... manicures, pedicures and cuts are just down the hallway in our salon. Visit the chapel for devotion, or take in a movie in the theatre.

Tapestry Moon is a full-service Assisted Living and Memory Care Community, offering exceptional amenities and 24-hour personal care tailored to your needs. Choose from spacious studio and one-bedroom apartment homes that include kitchenettes and private bathrooms.

*Exceptional amenities  
and 24-hour personal care  
tailored to your needs.*



# COMMUNITY AMENITIES

## Choices Abound at Tapestry Moon

### Medical & Safety

- 24/7 Emergency call system
- Emergency pendant
- Skilled nursing and hospice services
- Physical therapy office



### Entertainment

- Game room with full-size pool table, darts and other games
- Large theatre & dance hall
- Resident enrichment programs and social events



### Food

- Healthy, restaurant-style meals served continuously throughout the day
- Internet cafe and business center
- Refreshment station stocked with coffee, infused waters and snacks
- Tastefully designed kitchenettes



### Laundry & Housekeeping

- Laundry and/or linen service weekly (2 loads a week)
- Housekeeping weekly

*Exceptional Amenities  
Catered to Your Needs*

### Exercise & Beauty

- Dedicated exercise classroom
- Health and wellness programs
- Full-service beauty salon



### Apartment Features

- An array of studio and one-bedroom floor plans
- Individually controlled heating and cooling system
- All utilities (electric, gas, water, trash and recycling)
- Cable TV access
- Plenty of on-site parking
- Scheduled transportation in our Tapestry van



# ENHANCED LIVING

## Independence and Self-Determination

Tapestry Senior Living believes everyone should have the opportunity to remain independent and in charge of their daily lives. To help fulfill this belief Tapestry offers its special brand of Enhanced Living opportunities to encourage and assist a person to develop and maintain maximum independence and self-determination while living in a safe, active, and caring environment.

For a fixed monthly fee, Tapestry Senior Living provides an independent home for each resident with access to community services and amenities and, when needed, assistance with activities of daily living. And of course your beloved companion is welcome to come along on this new adventure – we're pet friendly!

### *Encouraging a Person to Maintain Maximum Independence*

#### Enhanced Living Services

- Weekly housekeeping services.
- Electricity, gas, water, sewer, trash, and cable TV.
- Wi-Fi access to high-speed Internet.
- Local and domestic long-distance services.
- Breakfast, lunch, and dinner are served in one of our dining rooms. Snacks and beverages are available in multiple locations throughout the community.
- Emergency Services 24/7/365
- Personal clothing, flat linens, and towels laundered weekly. A free laundry is also available for self-service.
- Maintenance of your apartment, the building, and surrounding grounds.
- Life enrichment programs.
- Scheduled transportation to assist residents to attend activities outside of the community.
- Assistance in coordinating healthcare appointments.
- Daily "I'm OK" checks to make sure all is well.



# ASSISTED LIVING

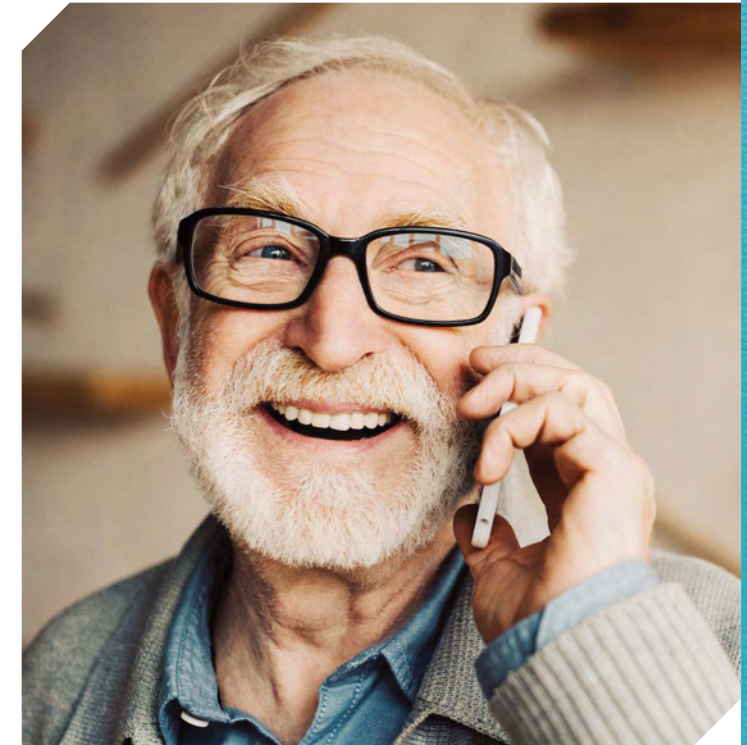
## Personal Care Tailored to Your Needs

Tapestry Moon takes a person-centered approach to assisted living, enhancing the lives of individuals in a personalized and meaningful way.

In our system, seniors and families work with our staff to create a plan that meets their individual needs. Whether it's nursing care, rehabilitative therapy, or help with any activities of daily living; seniors can get the help they want all while also enjoying innovative programs with a robust calendar of activities and events.



### *Assisted Living is about empowering you to live life to its fullest*



#### Assisted Living Services

- Personal care planning with a Tapestry nurse.
- Customized Nursing care.
- Help with daily personal cares and Activities of Daily Living (ADLs).
- Physical therapy, occupational therapy, speech therapy.
- Individualized health and wellness programs.
- Wearable caregiver call system.
- Medication administration and pharmacy delivery services.
- Weekly housekeeping & laundry included, additional service available.
- Scheduled transportation to nearby medical appointments and social outings.

# MEMORY CARE

## Tailored for Your Needs

Nowhere is Tapestry's Person-Centered Care philosophy more evident than in our memory care program. We respect that each resident is an individual with a rich life and a distinct personality. We don't try to fit the resident into our program, and we tailor the program to fit the individual.

It is important that our Tapestry trained caregivers get to know each resident; their habits, their likes and dislikes... the things that make them a unique person. This ongoing process is critical to being effective partners and guides along each resident's path. We are here to learn and listen.



Together with the resident, family, physician, and staff, we will work with you to customize a personalized care plan. Personal care, nursing, meals and life enrichment are all tailored to fit each resident's unique wants and needs. It's all about respect for the individual. That's what makes Tapestry approach a success.

Memory Care at Tapestry Moon is offered in smaller neighborhoods where residents have the personalized support they need in a more intimate and secure setting. The smaller scale allows more individualized programming in a relaxed atmosphere.

*Memory Care at Tapestry Moon is offered in smaller neighborhoods where residents have the personalized support they need*



### Memory Care Services

- Specialized memory care apartments.
- Music & memory. Our nationally accredited music therapy program.
- Specially trained memory care staff.
- "Person Centered Care". A personalized care plan for each individual.
- Consulting dietitian.
- Staff onsite in each neighborhood.
- Large private suites with private shower.
- Furniture provided if requested.



# Food Choices for All Your Cravings

Tapestry understands that you are an individual with unique tastes and a personal schedule. Whether you're up with the robins or you like to sleep in, Tapestry Senior Living Moon works with your schedule. For breakfast, head down to the Wise Owl Coffee Shop to watch the morning news over a

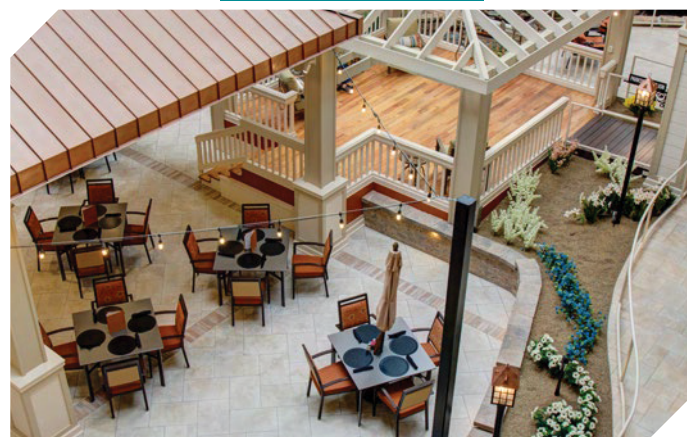
coffee and an enormous cinnamon roll. For lunch; try the Parkside Grill for our signature pierogies or a cup of Chef's housemade Italian wedding soup. For dinner, host your family at the Allegheny Dining Room. Whether you want to savor chicken marsala at 5 pm or blueberry pancakes at 7 pm, Tapestry Senior Living Moon has your unique tastes covered.

## Wise Owl Coffee Shop



Open early for hot coffee, fresh rolls, and other breakfast items. Lunch menu items include hot and cold sandwiches and a rotating selection of salads.

## Parkside Grill



Located in our airy, tree-lined atrium, the Parkside is the center of activity at Tapestry Moon. We honor the Polish roots with our signature Pierogies, but the menu reflects the changing Pennsylvania seasons.

## Luna's Pub



Open in the afternoon and evening, and is where friends gather for happy hour beverages, snacks and small plates. Watch the Steeler's game, battle with your team in a trivia contest, or just enjoy good conversation.

## Allegheny Dining Room



With linen tablecloths and a subdued atmosphere, the Allegheny offers simple elegance. Open for Breakfast, Lunch and Dinner, the rotating menu features a blend of traditional American and international dishes.



Of course, food is more than just nourishment. Gathering together with family, friends and neighbors is part of the fabric of our lives. Residents and their families gather at Tapestry for our traditional Sunday Brunch. Enjoy a menu filled with a variety of delightful fares like our fresh baked pastries hot from the oven; country ham carved to order; house-made biscuits, with local honey or sausage gravy. And that's just for starters!



*There is truly something for all tastes.*

# OUR STAFF

## People Who Care

### TAPESTRY CAREGIVERS SUPPORT YOUR JOURNEY

Tapestry is a special place because Tapestry caregivers are special people. We work hard to identify and recruit the very best caregivers; not just people who are skilled and knowledgeable, but also who understand that helping seniors with their journey is one of the most important and meaningful things a person can do.

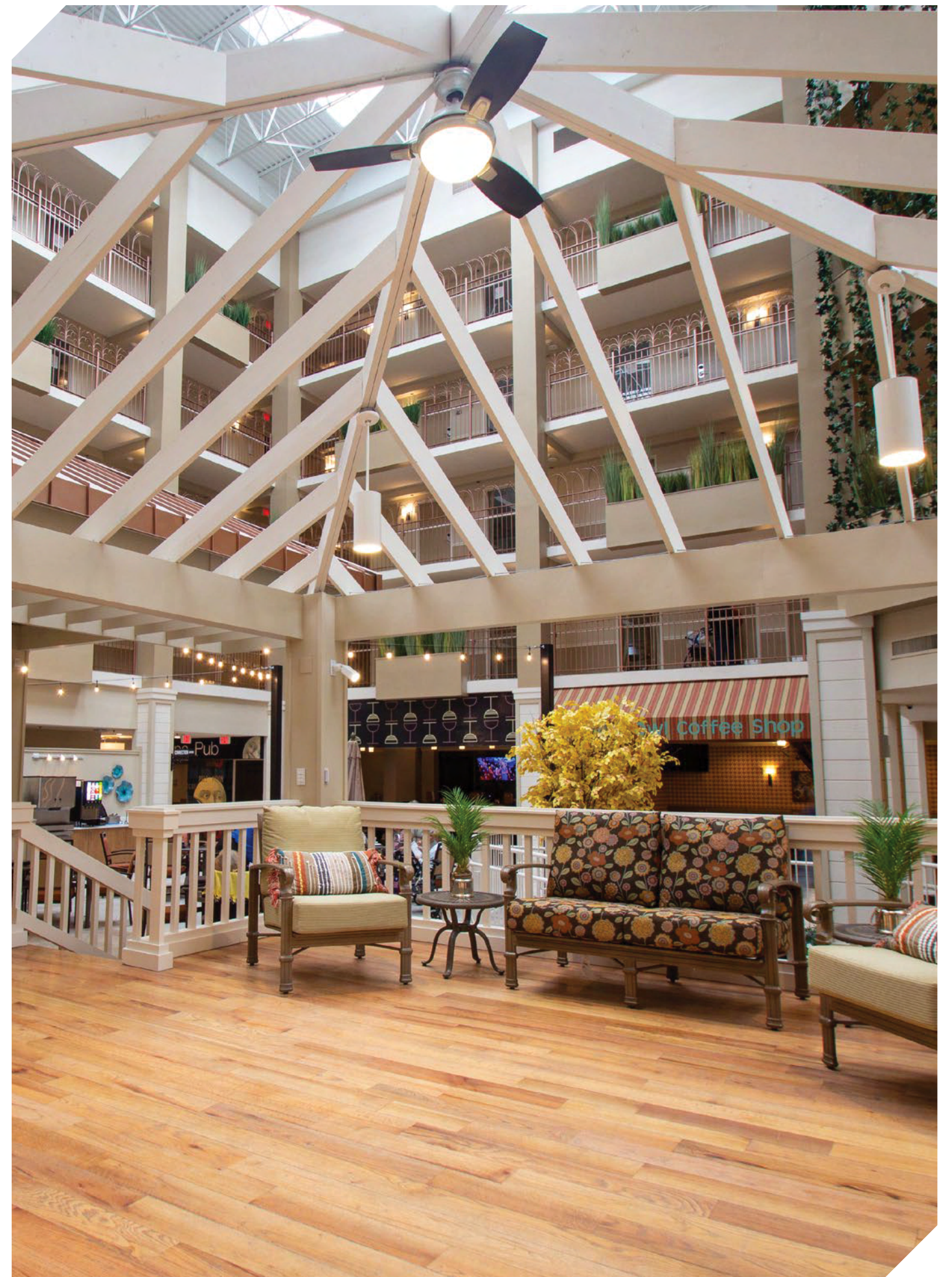
Caregiving is tough work. The job can be physically and emotionally demanding. Our caregivers work as a tight-knit team, supporting and encouraging each other. Like any tapestry, our strength comes from individual threads brought together with a common purpose. Together we can accomplish truly special things.

Tapestry believes in the importance of personal and professional growth. That's why our caregivers are always learning and growing. Our goal, as leaders in this industry, is to help create the leaders of tomorrow.



*"I am continually reminded  
just how blessed I am to work  
with such amazing people"*

— Chris Blum, CEO of Tapestry Senior Living



# FRIENDLY LIVING

## Family & Friends

Here at Tapestry Moon, our schedule revolves around your schedule. Our services are matched to meet all of your unique needs. You chart the course and we help you along the journey. We show this commitment in things like our signature All Day Dining, which offers your choice of restaurants at your convenience. We show it in how our nurses deliver customized, person-centered care for those who live in our spacious, assisted living apartments. We show it in how our memory care team helps residents and families thrive through a variety of services catered to fit you.

“When I walk into Tapestry Moon, I just feel like I’m home.” We hear this sentiment a lot because people care and take pride in this community. It shows in how we hosted Assisted Living and Memory Care residents displaced by hurricane. It shows in our commitment to understanding your unique needs via our Person-Centered Care. It shows in how Assisted Living and Memory Care neighbors stay active; fishing, touring brewpubs and worshipping together. But perhaps most of all, it shows in the smiles and hugs from our Tapestry Moon team members.



*When I walk into Tapestry Moon, I just feel like I'm home.*

# FAMILY & FRIENDS ARE ALWAYS WELCOME HERE AT TAPESTRY!



# ACTIVE LIFESTYLE

## Mind, Body, & Soul

Whether it is growing your own herbs in our gardens, taking salsa dancing lessons, participating in our talent show, watching college football, relaxing during a tea party, singing in our choir, creating a tasteful sensation at a baking class, or celebrating every holiday to its fullest; there is never a dull moment at Tapestry.

We know your needs and desires are unique. That's why at Tapestry, we work with you and your physician to design a personalized care plan to meet your needs. The goal of our dedicated nurses, therapists, and aides is to establish a strong relationship allowing us to learn from you and work to meet your needs consistently. It's the Tapestry difference!



*Living well goes beyond just  
your physical health -  
it includes your mind and spirit.*

### PHYSICAL

Our Health and Wellness programs are a great way to exercise and meet new friends. If you prefer getting your exercise outside, enjoy changing seasons and walk outdoors on our walking paths. Finished with your workout?

### SPIRITUAL

Find a quiet place and enjoy some peaceful time to renew and reflect. Visit our on-site chapel or curl up with a good book in one of our cozy, quiet reading areas.

### EMOTIONAL

Maintaining a positive outlook and feeling good about yourself and others are important to everyone's health. At Tapestry, we'll help you stay challenged, enjoy new activities and explore your creative side through music and art programs, guest speakers and a variety of social gatherings. There's even a theatre room where you can enjoy your favorite movies. Unique to Tapestry, we have a specialized Music and Memory facility, helping our residents use music as a valuable healing tool.



# OUTINGS

## Life Outside of Tapestry



*We keep our residents stimulated with a variety of outdoor and indoor activities beyond the walls of our facility.*

Whether it be a trip to the bowling lanes, we keep our residents stimulated with a variety of outdoor and indoor activities beyond the walls of our facility. It is our goal to create fun, life-enhancing activities in the outside world!

Coffee shops are an experience for the senses: the smell of roasted coffee and sweets, the taste of treats, and the sight and sound of baristas hard at work.

Picnicking in the park, exploring our beautiful city, sightseeing at our great museums, bowling at the ally, or dining at a fun restaurant.



# SPECIAL EVENTS

50s Prom, Halloween, Carnival!



*The world becomes more vibrant and inviting when we give ourselves permission to play.*



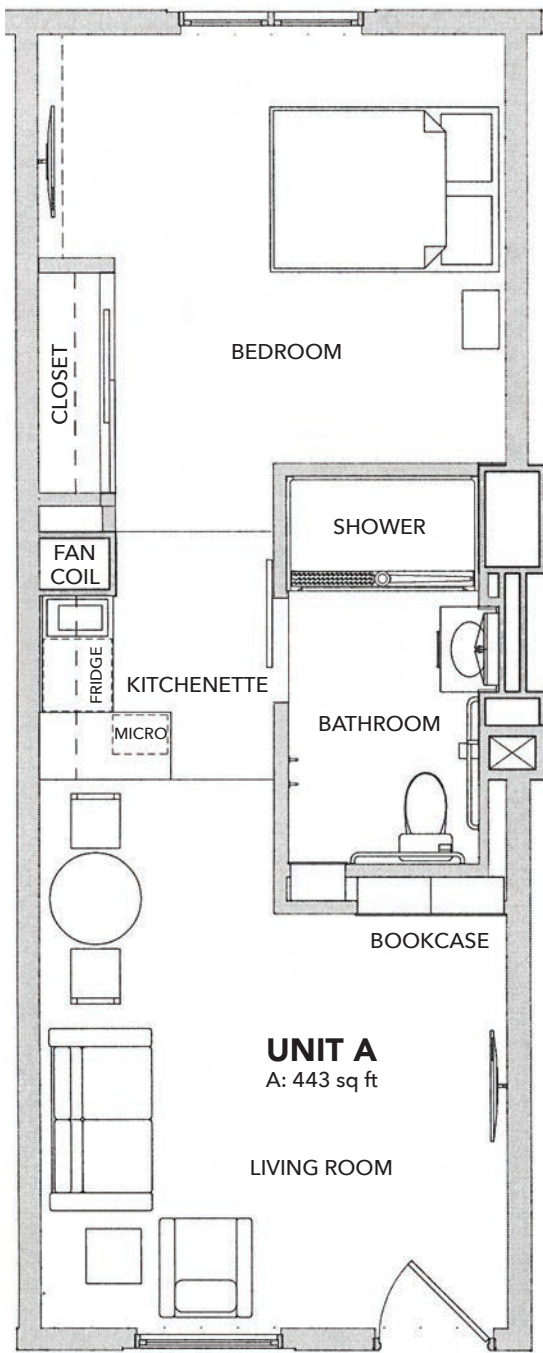
At Tapestry, we're always having a good time! Whatever the season, we have a special event planned for it as well as a number of other special events, such as our "carnival", to keep the social calendar hopping.

Tapestry's big events, like this carnival, are what make us feel truly alive, engaged, and connected. The world becomes more vibrant and inviting when we give ourselves permission to play.

Enjoying ukulele players at our luau, dancing at our 1950's prom, enjoying our white winter wonderland, celebrating our Veterans, and sharing a feast for the holidays.

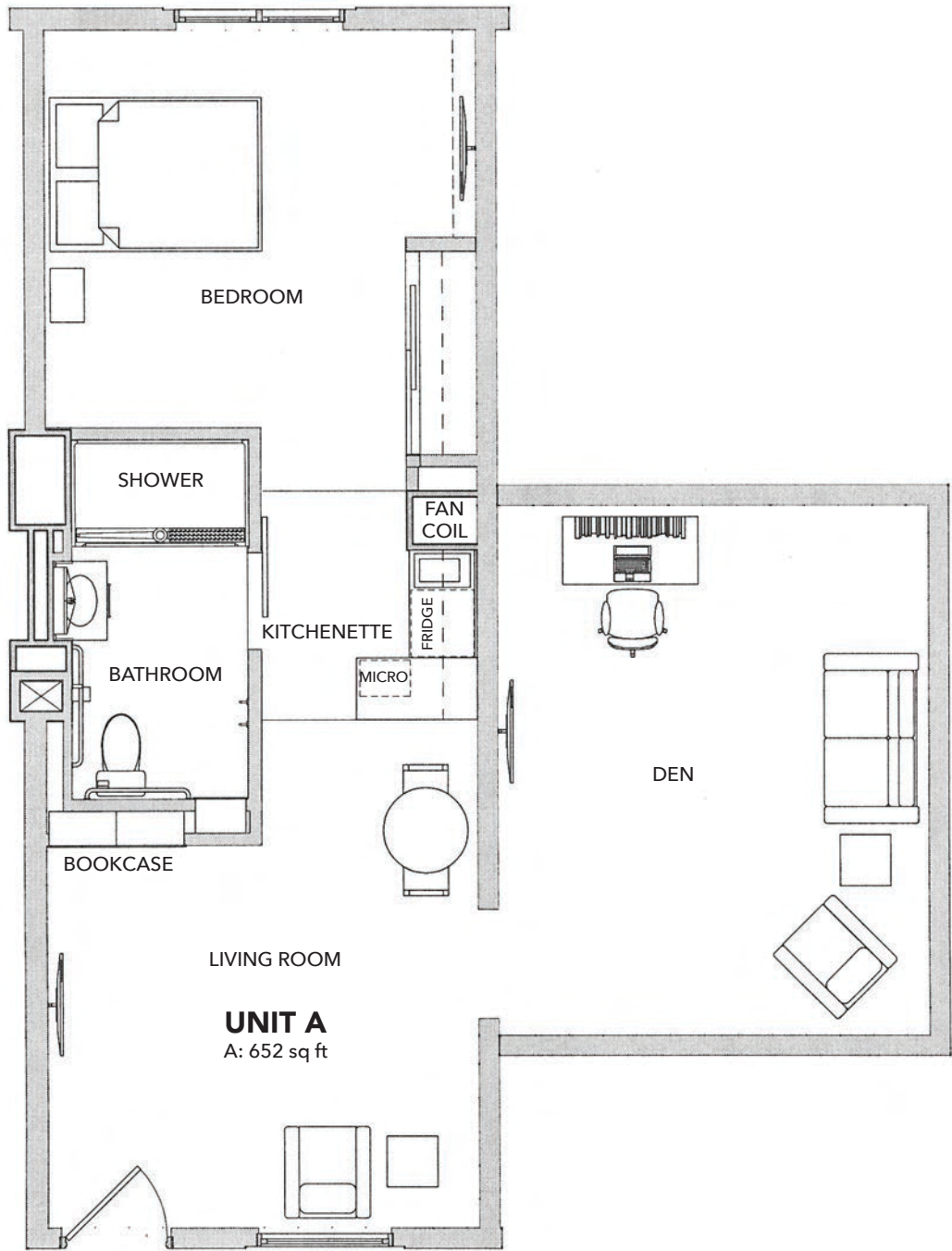
# FLOOR PLAN - MAGNOLIA

Assisted Living Apartment



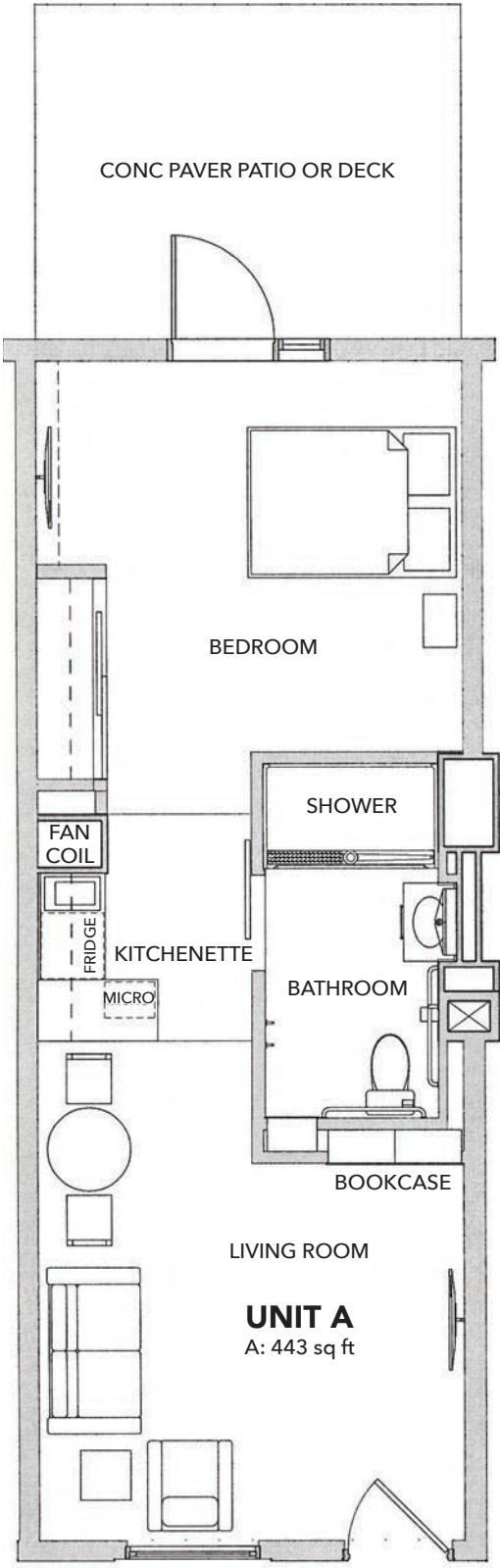
# FLOOR PLAN - AZALEA

Assisted Living Apartment



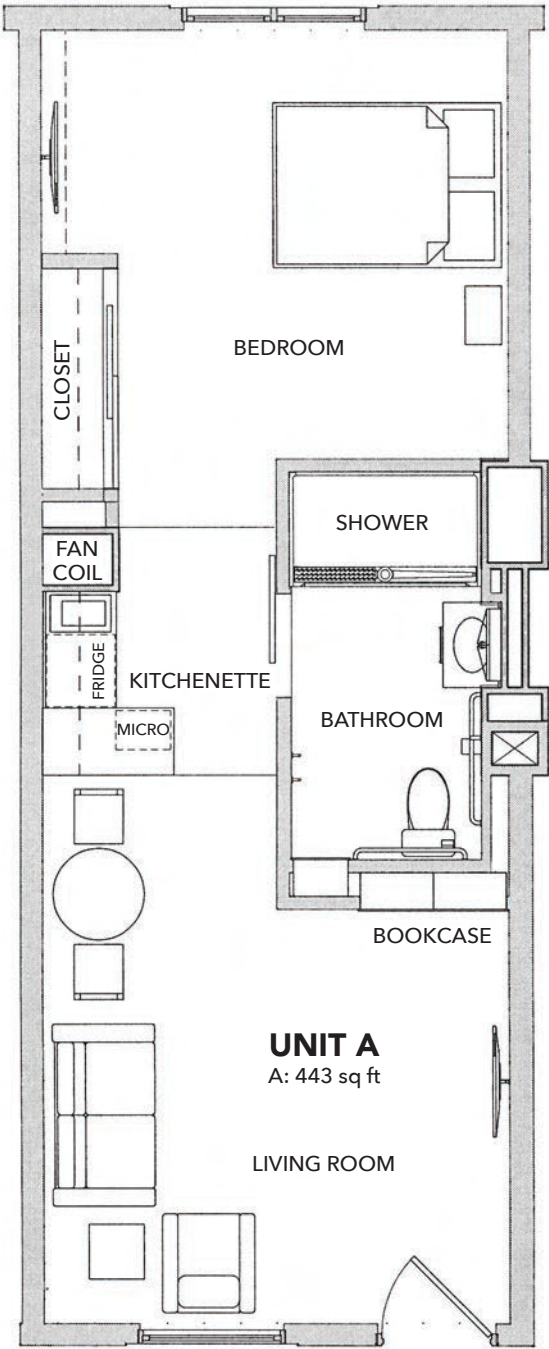
# FLOOR PLAN - ZINNIA

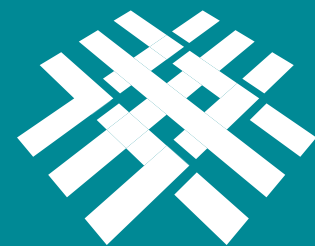
Assisted Living Apartment



# FLOOR PLAN - PETUNIA

Memory Care Apartment





**TAPESTRY**  
SENIOR LIVING  
*Hoon Township*



**TAPESTRY**  
**SENIOR LIVING**  
*Moon Township*

[TapestrySenior.com/Moon](http://TapestrySenior.com/Moon)

550 Cherrington Pkwy • Coraopolis, PA 15108 • (412) 507-9999

License #450091